



£275,000

Ladygrove, Belper DE56 2JS

Semi-Detached House | 3 Bedrooms | 1 Bathroom

01773 820983

DERBYSHIRE
PROPERTIES
SALES & LETTINGS

www.derbyshireproperties.com



Step Inside

Key Features

- Traditional Semi Detached House
- Extended To Rear
- Lounge/Diner
- Delightful Private Garden
- Detached Garage With Store
- Beautiful Countryside Views
- Fitted Kitchen and Utility
- Large Driveway
- No Chain Involved
- COUNCIL TAX BAND B

Property Description

New to the market is this beautifully presented extended 3 bedroom semi detached house offering stunning countryside views.

Main Particulars

Derbyshire Properties are delighted to present this three bedroom traditional semi-detached property with private garden enjoying delightful countryside views located between the villages of Ambergate and Lower Hartshay.

Enjoys views across open fields and countryside of Fritchley, Crich Stand and Wingfield Park.

The property is set back behind a large tarmac driveway with block paved edges providing car standing spaces for several cars and leads to a detached garage with store.

We believe the property was built in the 1930's and is constructed of brick beneath a pitched tiled roof with the front elevation having an attractive bay fronted appearance and benefits from gas central heating and double glazing.

An internal inspection will reveal; arched storm porch, entrance hall with staircase leading to the first floor, cloakroom with WC, lounge/dining room with feature fireplace with inset gas fire, fitted kitchen and fitted utility room. The first floor landing leads to three bedrooms and a fitted bathroom in white with shower.

The property enjoys a private, sunny, enclosed rear garden laid to lawn with well stocked flower beds, shrubs and plants and a paved patio. A new Roof has also recently been installed.

Storm Porch

With original black and white Minton tile flooring and double glazed door with leaded finish opening into the entrance hall.

Entrance Hall

3.35m x 1.82m (11' 0" x 6' 0") With deep skirting boards and architraves, high ceiling, original oak flooring, radiator, useful under-stairs storage and staircase leading to the first floor with attractive balustrade.

Lounge/Diner

7.29m x 3.58m (23' 11" x 11' 9") With feature fireplace with surrounds with inset Living Flame gas fire and raised hearth, deep skirting boards and architraves, high ceiling, coving to ceiling, picture rail, fitted wall lights, bay radiator, additional radiator, feature internal stained glass window with leaded finish overlooking the kitchen area, double glazed bay window with leaded finish enjoying fine views over open countryside to the front and half glazed internal door.

Kitchen

4.53m x 2.46m (14' 10" x 8' 1") With one and a half bowl sink unit with chrome mixer tap, base units with drawer and cupboard fronts, tiled splash-backs, wall and base fitted units with matching worktops, built-in stainless steel four ring gas hob with extractor hood over and built-in stainless steel electric fan assisted oven. Wall mounted Potterton combination boiler, tiled flooring, two fitted illuminated china cabinets with glass shelves, spotlights to ceiling, space for fridge, space for freezer, radiator, open space leading into the utility area, double glazed window with aspect to the rear and double glazed door giving access to the private rear garden.

Utility

1.80m x 1.55m (5' 11" x 5' 1") With fitted wall and base cupboards with matching worktops, concealed space with plumbing for automatic washing machine, concealed space for tumble dryer, matching tiled flooring, radiator and double glazed obscure window.

Cloakroom

With low level WC, wash basin, tiled splash-back, tiled flooring, extractor fan and internal panelled door.

First Floor

Landing

With matching attractive balustrade, deep skirting boards and architraves, high ceiling, double glazed side window and access to the roof space.

Bedroom 1

4.47m x 3.58m (14' 8" x 11' 9") With chimney breast, deep skirting boards and architraves, high ceiling, coving to ceiling, bay radiator, double glazed bay window with leaded finish and aspect to the front enjoying fine open views and internal panelled door.

Bedroom 2

3.60m x 2.72m (11' 10" x 8' 11") With built-in storage cupboard with shelving, deep skirting boards and architraves, high ceiling, coving to ceiling, radiator, double glazed window overlooking the private rear garden and internal panelled door.

Bedroom 3

6' 7" x 6' 0" (2.01m x 1.83m) With deep skirting boards and architraves, high ceiling, coving to ceiling, radiator, double glazed window with leaded finish and aspect to the front and enjoying delightful open views and internal panelled door.

Bathroom

1.81m x 1.77m (5' 11" x 5' 10") With deep skirting boards and architraves, high ceiling, coving to ceiling, radiator, double glazed window with leaded finish and aspect to the front and enjoying delightful open views and internal panelled door.

Outside

Front Garden - The property is set back from the pavement edge behind a small fore garden with a varied selection of shrubs and plants with a natural stone retaining wall.

Rear Garden - Being of a major asset to the sale of this particular property is its private, sunny, enclosed rear garden. The garden is laid to lawn with a paved patio, a varied selection of shrubs and plants and is fully enclosed. Cold water tap, power and outside light.

Driveway - The property benefits from a tarmac driveway with block paved edges providing car standing spaces for several cars and continues to the side of the property which in turn leads to the detached garage with store.

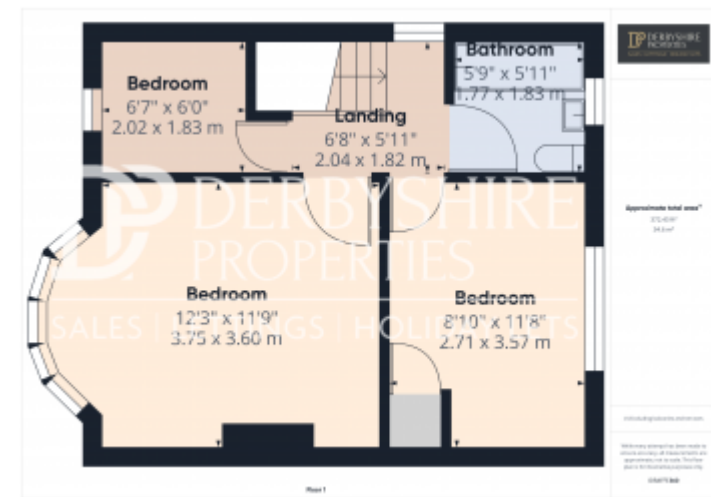
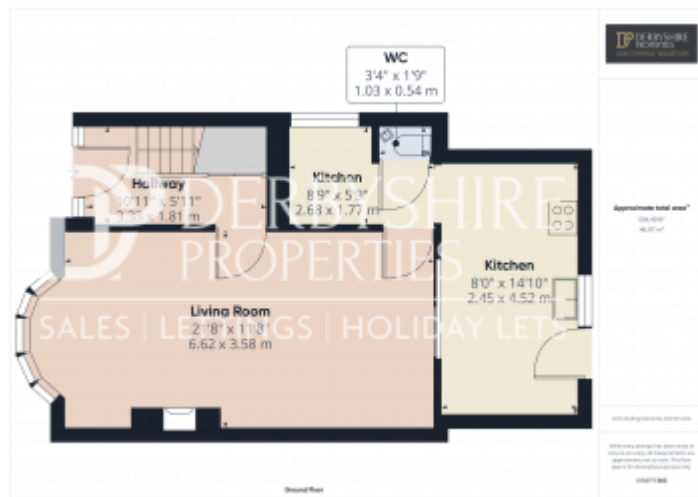
Detached Garage - 5.40 x 3.49 (17'8" x 11'5") - With power and lighting.

Attached Store - 3.47 x 2.07 (11'4" x 6'9") - With power and lighting.

Disclaimer

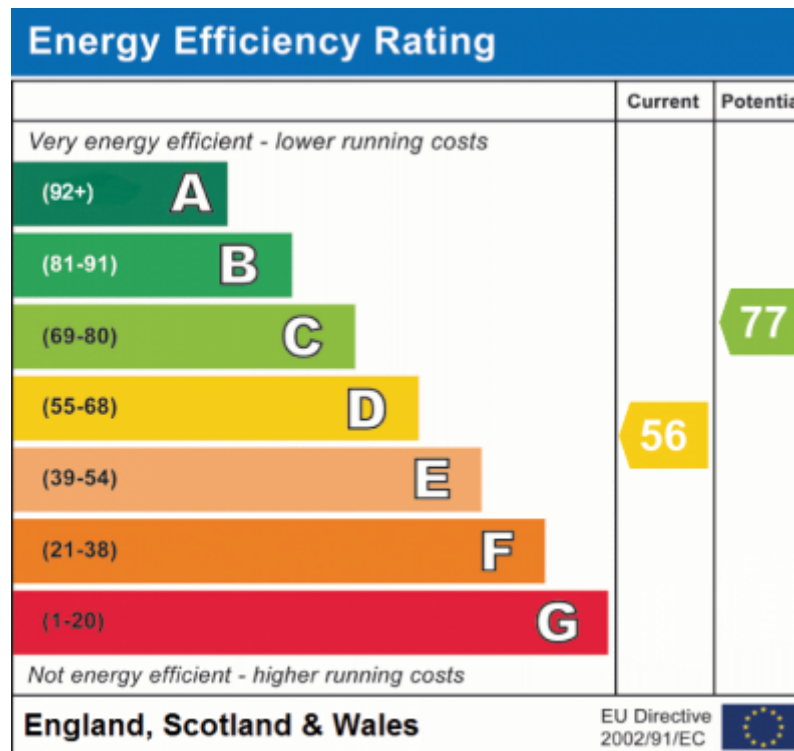
1. MONEY LAUNDERING REGULATIONS - Intending purchasers will be asked to produce identification documentation at a later stage and we would ask for your co-operation in order that there will be no delay in agreeing the sale.
- 2: These particulars do not constitute part or all of an offer or contract.
- 3: The measurements indicated are supplied for guidance only and as such must be considered incorrect.
- 4: Potential buyers are advised to recheck the measurements before committing to any expense.
- 5: Derbyshire Properties have not tested any apparatus, equipment, fixtures, fittings or services and it is the buyers interests to check the working condition of any appliances.
- 6: Derbyshire Properties have not sought to verify the legal title of the property and the buyers must obtain verification from their solicitor.





This floorplan is for illustrative purposes only and the location of doors, windows and other items are approximate.

Agents notes: All measurements are approximate and for general guidance only and whilst every attempt has been made to ensure accuracy, they must not be relied on. The fixtures, fittings and appliances referred to have not been tested and therefore no guarantee can be given that they are in working order. Internal photographs are reproduced for general information and it must not be inferred that any item shown is included with the property. Copyright © 2024 05458547 Registered Office: , 9 Bridge Street Belper Derbyshire DE56 1AY



Telephone: 01773 820983

 **DERBYSHIRE
PROPERTIES**
= RAMP & RESTIMAR =

www.derbyshireproperties.com